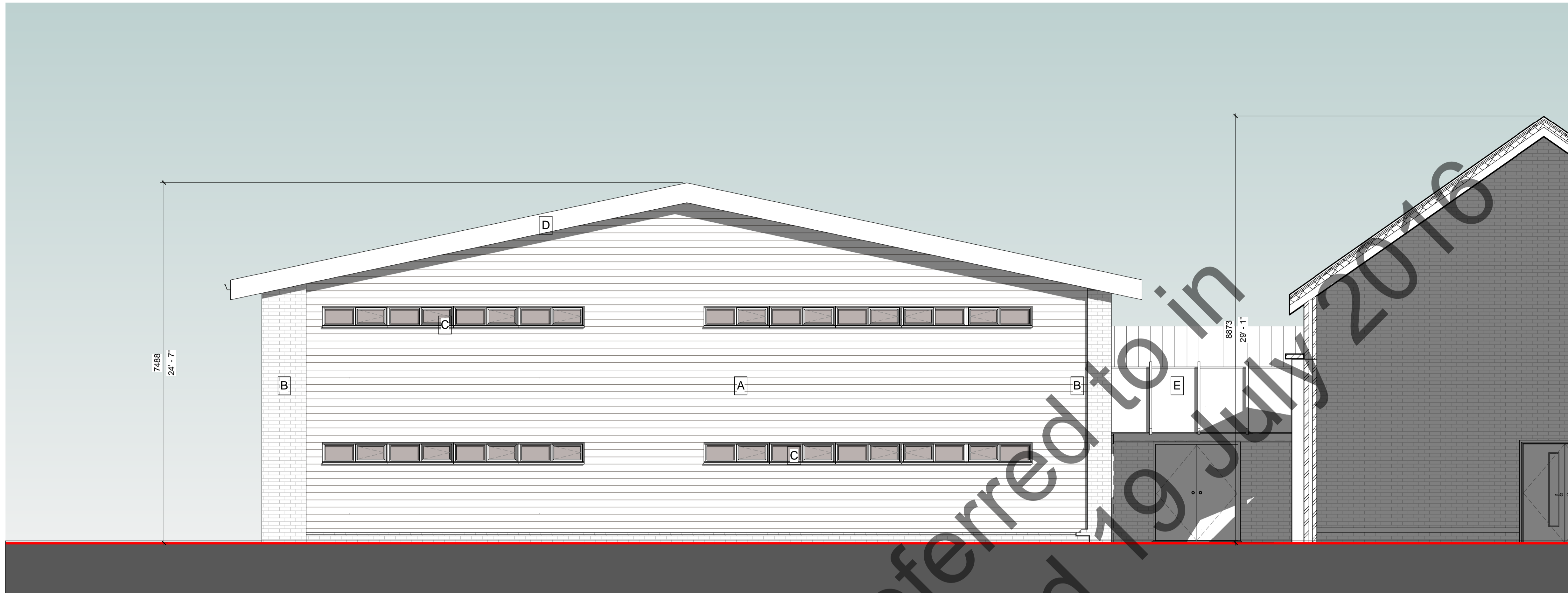


Do not scale.
 Dimensions to be verified on site. Use figured dimensions only. Do not work from reduced scale drawings. Please refer to scale and sheet size as indicated.
 This drawing is the property of WESTRIDGE CONSTRUCTION LTD ©.
 Copyright is reserved by them and the drawing is issued on the condition that it is not copied, reproduced, retained or disclosed to any unauthorised person without the prior consent in writing of Westridge Construction Ltd.

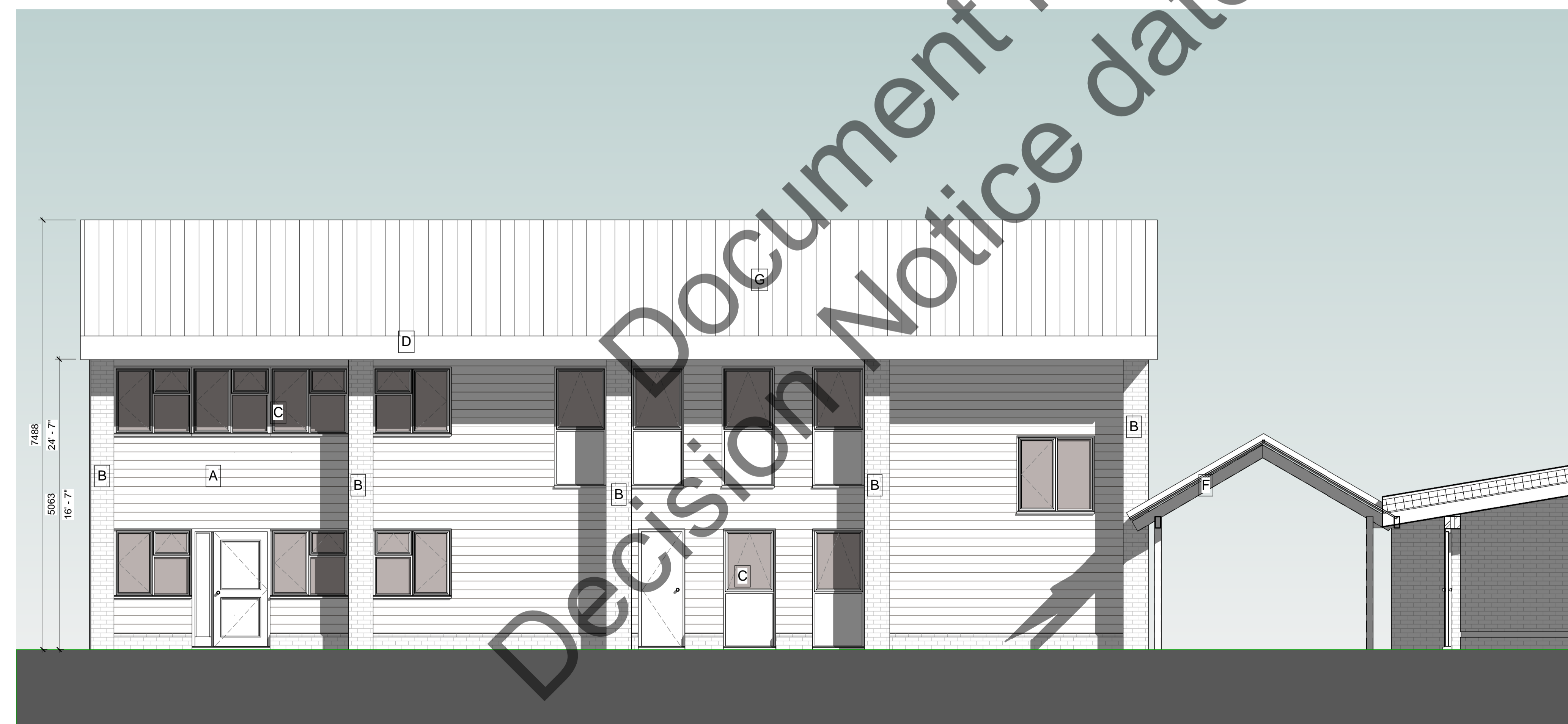
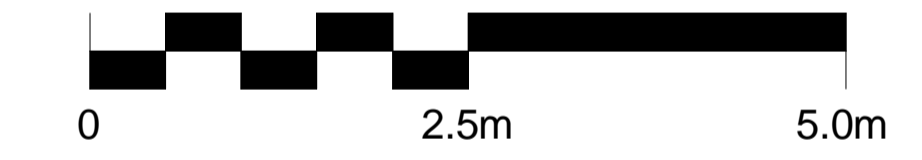
NOTES:



West Elevation

Material Schedule

- A Thermowood cladding
- B Yellow, smooth face brickwork
- C Aluminium double glazed windows RAL 7038
- D Aluminium Fascia and barge boards RAL 7038
- E Polycarbonate sheeting to canopy roof
- F PPC coated steel frame to canopy RAL 9010
- G Profiled metal roofing



South Elevation

E	Height of building shown	3/5/16
D	Planning Issue	5/4/16
C	Design Freeze	11/3/16
B	External doors to classrooms changed to single leaf	10/3/16
A	Design Approval	1/3/16

Rev	Description	Date
-----	-------------	------



Westridge Construction Limited
 Ruskin House, Junction Road
 Bodiam, East Sussex TN32 5UP
 Tel: 01580 830600
 Fax: 01580 830700
 Email: enquiries@westridgeconstruction.co.uk
 Web: westridgeconstruction.co.uk

Project
Rustington Community Primary School

Drawing Title
**West and South Elevations
 New Classrooms**

Name	Signed	Date	Scale
Drawn Author			1:50
Designed		02/23/16	
Checked Checker			Drawing Status
Approved			
Drawing Number 2389/013			Revision E